



GAT MONTHLY MEMBERSHIP PROGRESS REPORT

Results as of: 2/28/2021

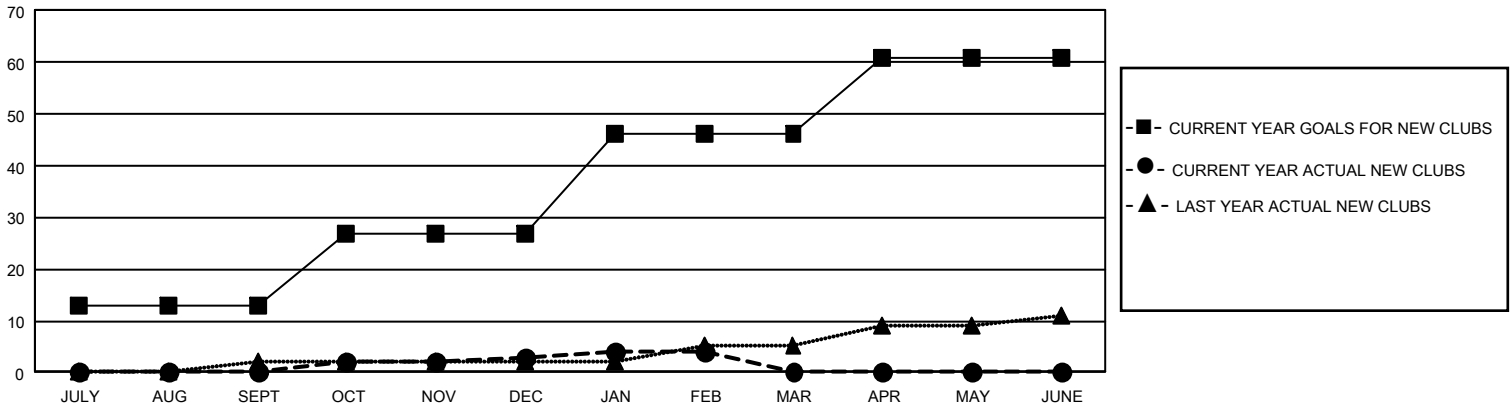
GAT Constitutional Area 5 - Japan

REPORT DOES NOT INCLUDE CLUBS IN UNDISTRICTED AREAS.

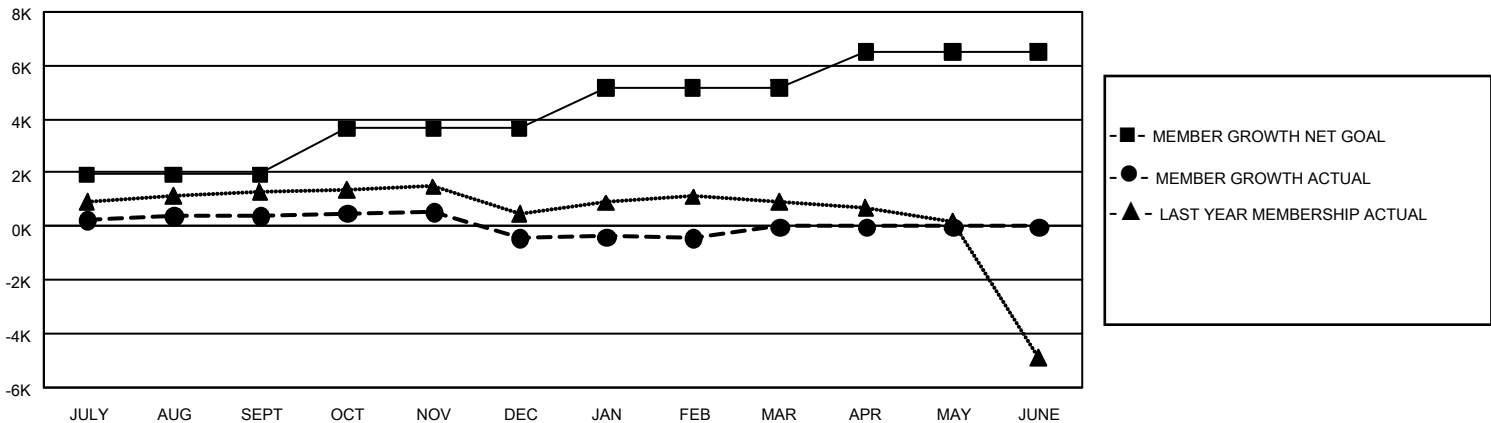
Clubs			
RESULTS FOR 2020-2021			
QUARTER	NEW CLUB GOAL	NEW CLUBS	DROPPED CLUBS
JULY/AUG/SEPT	39	0	5
OCT/NOV/DEC	42	3	12
JAN/FEB/MAR	57	1	2
APR/MAY/JUNE	45	0	0

Members			
RESULTS FOR 2020-2021			
QUARTER	MEMBER GROWTH NET GOAL	MEMBER GROWTH ACTUAL	DROPPED MEMBERS ACTUAL (including transfers)
JULY/AUG/SEPT	1924	2,283	1,798
OCT/NOV/DEC	1716	1,380	2,107
JAN/FEB/MAR	1538	822	775
APR/MAY/JUNE	1337	0	0

GOALS AND ACTUAL NEW CLUBS CUMULATIVE



GOALS AND ACTUAL MEMBERS CUMULATIVE



DROPPED CLUBS: 19	1,640 CLUBS OF 2,912 ADDED 1 OR MORE NEW MEMBERS	<u>GENDER DISTRIBUTION</u>	
<u>DROPPED MEMBERS</u>		MALE	80,584 (76.18%)
DECEASED	581	FEMALE	25,202 (23.82%)
CLUB CANCELLED	32	TOTAL FAMILY UNIT MEMBERS 38,008	
OTHER	4,065	FAMILY MEMBERS PAYING HALF DUES 20,922	
TOTAL	4,678		

[CLICK HERE FOR CUMULATIVE MEMBERSHIP DATA](#)